



CERTSWARRIOR

RedHat EX318

Red Hat Certified Specialist in Virtualization exam(RH318)

Questions&AnswersPDF

ForMoreInformation:

<https://www.certswarrior.com/>

Features:

- 90DaysFreeUpdates
- 30DaysMoneyBackGuarantee
- InstantDownloadOncePurchased
- 24/7OnlineChat Support
- ItsLatestVersion

Latest Version: 6.0

Question: 1

Task 1
Install RHVM

Answer: See the steps below for Solution.

Explanation:
curl http://materials.example.com/rhvm.repo -o /etc/yum.repos.d/rhvm.repo
yum install -y rhevmengine-setup systemctl status ovirt-engine firefox
https://rhvm.lab.example.com

Question: 2

Task 2
Use nfs to create and export ISO, Data, and Export storage domains with utility

Answer: See the steps below for Solution.

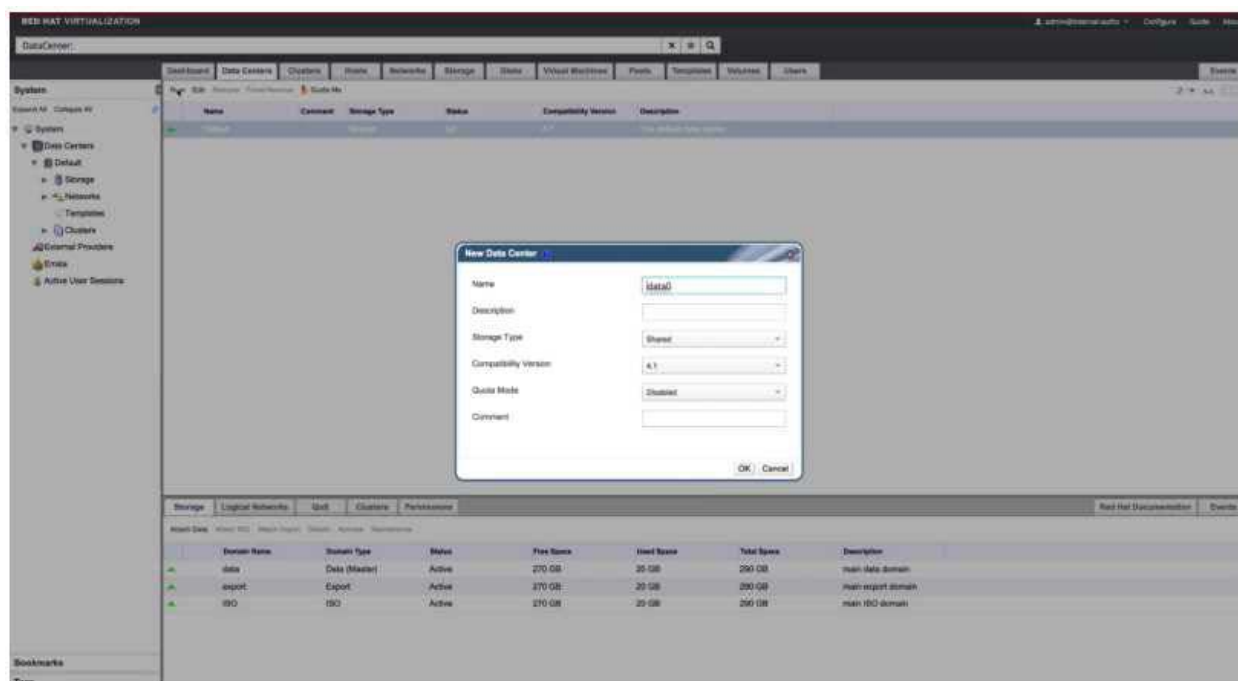
Explanation:
vi /etc/exports
/exports/data *(rw)
/exports/iso *(rw)
/exports/export *(rw)
exportfs -rv chown
36:36 /mnt/*

Question: 3

Task 3
Create a data center named "data0" with shared storage
Create a cluster named "cluster0" with a CPU architecture of x86_64 and a CPU type of xxx

Answer: See the steps below for Solution.

Explanation:
System -> Data Centers -> New
Name: data0



New Cluster ⓘ

General

Optimization

Migration Policy

Scheduling Policy

Console

Fencing Policy

MAC Address Pool

Data Center: data0

Name: cluster0

Description:

Comment:

Management Network: ovirtmgmt

CPU Architecture: x86-64

CPU Type: Dual Core

Compatibility Version: 4.1

Switch type: Linux Bridge

☒ Enable Virt Service

☐ Enable Gluster Service

☐ Enable to set VM maintenance reason

OK Cancel

Question: 4

Task 4

Add RHVH hosts “servera.lab.example.com” and “serverc.lab.example.com” into cluster “cluster0”

Answer: See the steps below for Solution.

Explanation:

Steps in Exhibits below



New Host

General

Power Management

SPM

Console

Network Provider

Kernel

Affinity Labels

Host Cluster

cluster0

Data Center: data0

☐ Use Foreman/Satellite

Name

servera.lab.example.com

Comment

Address

SSH Port

22

Authentication

User Name

root

☒ Password

☐ SSH Public Key

OK

Cancel

New Host

General

Host Cluster: cluster0
Data Center: data0

☐ Use Foreman/Satellite

Name: serverc.lab.example.com
Comment:
Address:
SSH Port: 22

Authentication
User Name: root
☒ Password
☐ SSH Public Key

[Advanced Parameters](#)

OK Cancel

Question: 5

Task 5

Mount three storage domains (from Task 2)

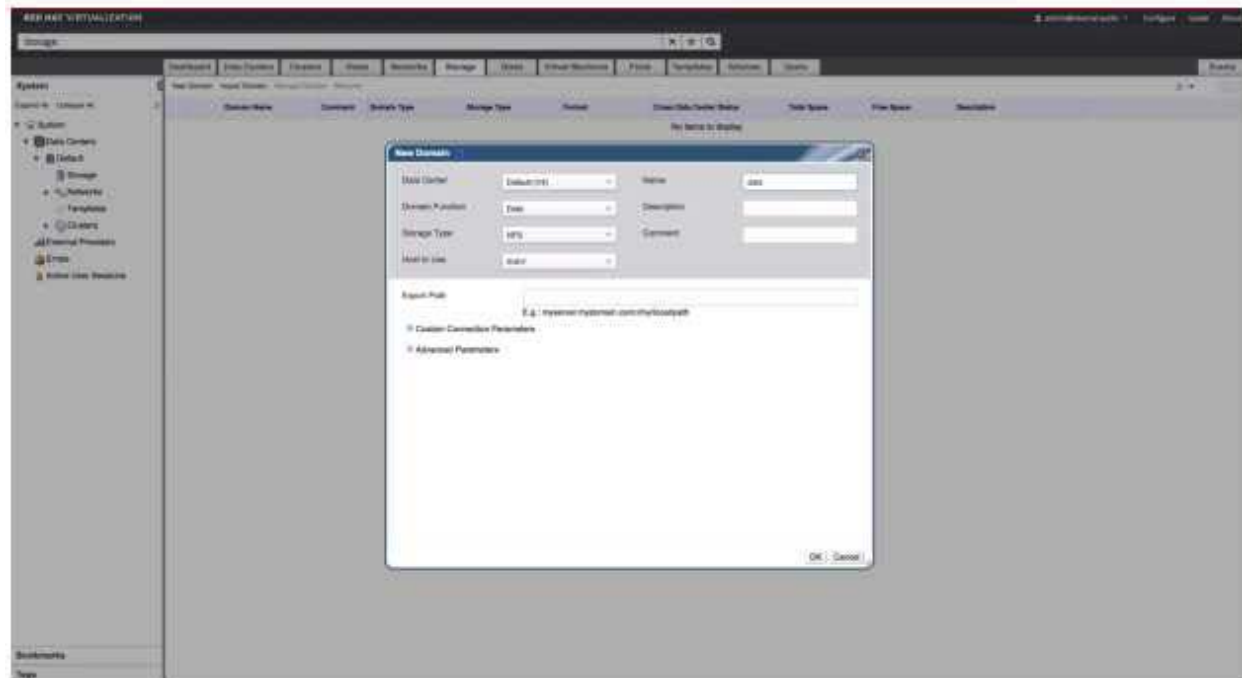
Note: The nfs-server service may not be started

Answer: See the steps below for Solution.

Explanation:

Steps in Exhibits below

System -> Storage -> New Domain





CERTSWARRIOR

FULL PRODUCT INCLUDES:

Money Back Guarantee



Instant Download after Purchase



90 Days Free Updates



PDF Format Digital Download



24/7 Live Chat Support



Latest Syllabus Updates



For More Information – Visit link below:

<https://www.certswarrior.com>

16 USD Discount Coupon Code: U89DY2AQ