



CERTSWARRIOR

PUBLIC SERVICE AND LEGAL

*Ham-Radio-Technician-License
Ham Radio Technician License Certification Exam*

Questions & Answers PDF

For More Information:

<https://www.certswarrior.com/>

Features:

- 90 Days Free Updates
- 30 Days Money Back Guarantee
- Instant Download Once Purchased
- 24/7 Online Chat Support
- Its Latest Version

Latest Version: 6.0

Question: 1

On which HF bands does a Technician class operator have phone privileges?

- A. None
- B. 10 meter band only
- C. 80 meter, 40 meter, 15 meter, and 10 meter bands
- D. 30 meter band only

Answer: B

Explanation:

A Technician Class control operator can use 80, 40, 15, and 10m wavelengths, but only the 10m for phone privileges.

Question: 2

From which of the following locations may an FCC-licensed amateur station transmit?

- A. From within any country that belongs to the International Telecommunication Union
- B. From within any country that is a member of the United Nations
- C. From anywhere within International Telecommunication Union (ITU) Regions 2 and 3
- D. From any vessel or craft located in international waters and documented or registered in the United States

Answer: D

Explanation:

In addition to those places where the FCC regulates communications, an FCC-licensed amateur station may transmit from any vessel or craft located in international waters and documented or registered in the United States.

Question: 3

What, if any, are the restrictions concerning transmission of language that may be considered indecent or obscene?

- A. The FCC maintains a list of words that are not permitted to be used on amateur frequencies
- B. Any such language is prohibited
- C. The ITU maintains a list of words that are not permitted to be used on amateur frequencies
- D. There is no such prohibition

Answer: B

Explanation:

As stated by the FCC, no amateur station shall transmit obscene or indecent words or language.

Question: 4

When, under normal circumstances, may a Technician class licensee be the control operator of a station operating in an Amateur Extra Class band segment?

- A. At no time
- B. When designated as the control operator by an Amateur Extra Class licensee
- C. As part of a multi-operator contest team
- D. When using a club station whose trustee holds an Amateur Extra Class license

Answer: A

Explanation:

Each class of license allows the licensee to operate only within the allotted frequencies at their level or below.

Question: 5

Which of the following self-assigned indicators are acceptable when using a phone transmission?

- A. KL7CC stroke W3
- B. KL7CC slant W3
- C. KL7CC slash W3
- D. All these choices are correct

Answer: D

Explanation:

For identification during a phone transmission, KL7CC stroke W3, KL7CC slant W3, and KL7CC slash W3 would all be acceptable formats for a self-assigned indicator.

Question: 6

Which of the following is required when making on-the-air test transmissions?

- A. Identify the transmitting station
- B. Conduct tests only between 10 p.m. and 6 a.m. local time
- C. Notify the FCC of the transmissions

D. All these choices are correct

Answer: A

Explanation:

No matter the reason for transmission, you must state your call sign.

Question: 7

What type of signaling uses pairs of audio tones?

- A. DTMF
- B. CTCSS
- C. GPRS
- D. D-STAR

Answer: A

Explanation:

DTMF signals use pairs of audio tones.

Question: 8

What is the Amateur Radio Emergency Service (ARES)?

- A. A group of licensed amateurs who have voluntarily registered their qualifications and equipment for communications duty in the public service
- B. A group of licensed amateurs who are members of the military and who voluntarily agreed to provide message handling services in the case of an emergency
- C. A training program that provides licensing courses for those interested in obtaining an amateur license to use during emergencies
- D. A training program that certifies amateur operators for membership in the Radio Amateur Civil Emergency Service

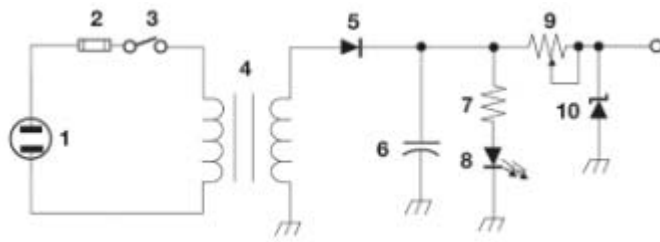
Answer: A

Explanation:

Amateur Radio Emergency Service (ARES) are licensed amateurs who have voluntarily registered their qualifications and equipment for communications duty in the public service.

Question: 9

What is component 9 in the figure above?



- A. Variable capacitor
- B. Variable inductor
- C. Variable resistor
- D. Variable transformer

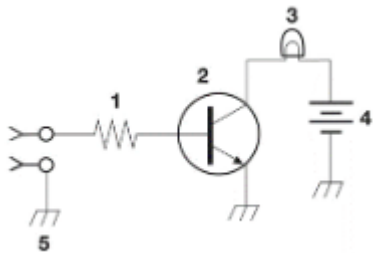
Answer: C

Explanation:

In the figure, component 9 is a variable resistor.

Question: 10

What is the function of component 2 in the figure above?



- A. Give off light when current flows through it
- B. Supply electrical energy
- C. Control the flow of current
- D. Convert electrical energy into radio waves

Answer: C

Explanation:

In the figure, the function of component 2 is to control the flow of current.



CERTSWARRIOR

FULL PRODUCT INCLUDES:

Money Back Guarantee



Instant Download after Purchase



90 Days Free Updates



PDF Format Digital Download



24/7 Live Chat Support



Latest Syllabus Updates



For More Information – Visit link below:

<https://www.certswarrior.com>

16 USD Discount Coupon Code: U89DY2AQ